



# 460 Nm

# Чугун

$n_2$ [min <sup>-1</sup> ]	i	P <sub>1M</sub> [kW]	M <sub>2M</sub> [Nm]	fs	P <sub>1R</sub> [kW]	M <sub>2R</sub> [Nm]		B5					B14					RD	 Код перед. числа		
								B	C	D	E	F	O	P	Q	R	T			U	V
								63	71	80	90	100 112	56	63	71	80	90			100 112	132

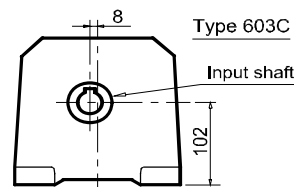
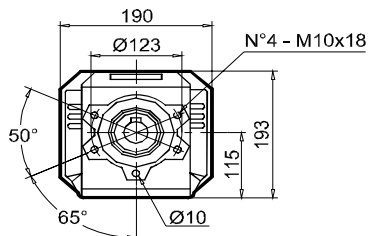
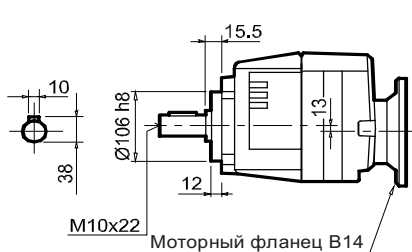
602C										n <sub>1</sub> = 1400 min <sup>-1</sup>									
388	3.61	7.5	177	0.9	7.0	165	30/35/40	B										96	3018
331	4.23	7.5	208	1.0	7.2	200	30/35/40	B										96	3016
279	5.01	7.5	246	1.0	7.3	240	30/35/40	B										96	3014 ●
231	6.07	7.5	298	0.9	6.8	270	30/35/40	B										96	3012
206	6.81	5.5	245	1.4	7.6	340	30/35/40	B										96	2018
176	7.96	5.5	287	1.3	7.1	370	30/35/40	B										96	2016
148	9.45	5.5	340	1.2	6.5	400	30/35/40	B										96	2014 ●
122	11.43	5.5	412	1.0	5.3	400	30/35/40	B										96	2012
99	14.21	4	372	1.2	4.7	435	30/35/40	B										96	2010
84	16.62	4	435	1.2	4.6	501	30/35/40	B										96	1314 ●
70	20.10	4	527	0.9	3.8	499	30/35/40	B										96	1312 ●
56	24.98	3	491	0.9	2.7	435	30/35/40	B										96	1310 ●
47.6	29.41	2.2	424	1.0	2.3	440	30/35/40	B										96	0814
39.3	35.58	1.85	431	1.2	2.1	499	30/35/40	B										96	0812
34.6	40.50	1.1	292	1.1	1.2	310	30/35/40	B										96	0614
31.7	44.23	1.5	434	1.0	1.5	435	30/35/40	B										96	0610
28.6	49.00	1.1	353	1.0	1.1	368	30/35/40	B										96	0612
23.0	60.90	1.1	439	1.0	1.1	435	30/35/40	B										96	0610

603C										n <sub>1</sub> = 1400 min <sup>-1</sup>									
35.2	39.79	1.5	379	1.1	1.7	434	30/35/40	B										93	191318
29.6	47.22	1.5	449	1.1	1.7	501	30/35/40	B										93	191316
25.6	54.73	1.5	521	1.0	1.4	501	30/35/40	B										93	191314 ●
24.5	57.13	1.1	399	1.3	1.4	500	30/35/40	B										93	171314
21.1	66.22	1.1	462	1.1	1.2	500	30/35/40	B										93	191312
19.7	71.01	1.1	496	0.9	0.97	435	30/35/40	B										93	171312
18.3	76.69	1.1	535	0.9	1.0	501	30/35/40	B										93	191310 ●
17.0	82.30	0.75	392	1.1	0.83	435	30/35/40	B										93	131314
16.7	83.59	0.75	398	1.1	0.83	441	30/35/40	B										93	171310
15.1	92.78	0.75	441	1.1	0.85	500	30/35/40	B										93	190814 ●
13.4	104.68	0.75	498	1.0	0.75	501	30/35/40	B										93	131312
11.9	117.22	0.55	409	1.2	0.67	500	30/35/40	B										93	101314
11.1	126.65	0.55	442	1.1	0.62	500	30/35/40	B										93	170812 ●
10.3	135.74	0.37	319	1.4	0.51	441	30/35/40	B										93	101312
9.6	145.68	0.37	342	1.3	0.47	435	30/35/40	B										93	130814
8.9	157.40	0.37	369	1.2	0.44	435	30/35/40	B										93	170810 ●
8.5	164.23	0.37	385	1.3	0.48	500	30/35/40	B										93	101310
7.6	185.29	0.37	435	1.0	0.38	441	30/35/40	B										93	130812
6.9	204.16	0.37	479	0.9	0.34	435	30/35/40	B										93	100814
6.2	224.18	0.37	526	1.0	0.35	500	30/35/40	B										93	130810
5.0	278.62	0.25	442	1.0	0.25	435	30/35/40	B										93	100812

B, C, ..	Возможные фланцы Motor flange available	B	Монтируется с проставкой Coupling by means of reduction bushing	C	Положение отверстий моторного фланца редуктора Motor flange/terminal box position
----------	--	---	--	---	---



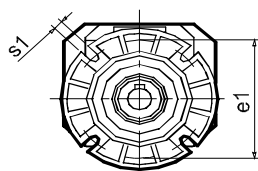
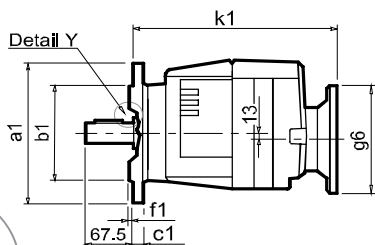
P602C-N  
P603C-N



602C 603C

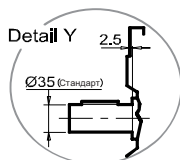
Масса (кг) с фланцем 21.4 21.2  
Масса (кг) с лапами 21.3 21.1

P602C-F  
P603C-F



Выходной фланец / Output flange

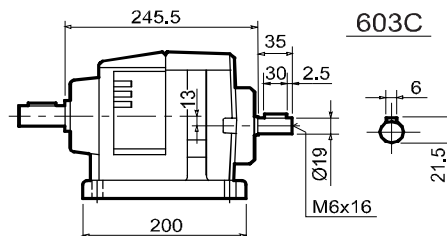
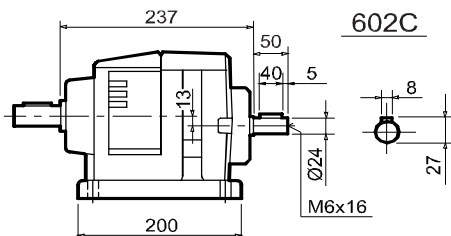
a1 Ø	b1	e1	c1	f1	s1
160	110	130	14	3,5	9
200	130	165	13	3,5	11
250	180	215	15,5	4	14



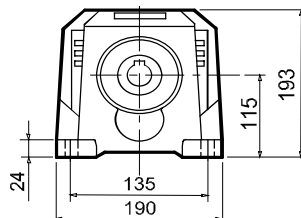
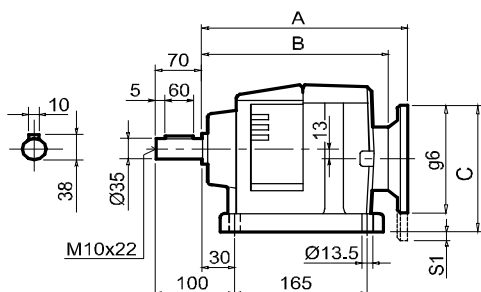
Ø Выходной вал  
Ø Output shaft

Стандарт	Ø 35x70
По запросу	Ø 30x60 Ø 38x70
On request	Ø 40x80

R602CSP  
R603CSP



P602CSP  
P603CSP



Тип 602A (моторные фланцы)

Моторные фланцы	A	B	C	g6	S1	k1
80 B14	243.8	225.3	162	120	246	
90 B14	243.8		172	140	246	
100 B14	254.8		182	160	260.7	
112 B14	254.8		182	160	246	
132 B14	273		215	200	282	
71 B5	243.8	182	160	246		
80/90 B5	245.8	202	200	248		
100 B5	251.8	227	250	23	254	

Тип 603A (моторные фланцы)

Motor Flange	A	B	C	g6	S1	k1
71 B14	252.5	234	156	105	275.5	
80 B14	253.5		162	120	276.5	
90 B14	254.5		172	140	277.5	
63 B5	254.5		172	140	277.5	
71 B5	252.5		182	160	275.5	
80/90 B5	254.5	202	200	277.5		